



ProCleaner X150

# First ever washing robot with dual obstacle detecting washing arms

+ Compact & Light + Long Battery Life + Super Fast + Stainless Steel



**WASHPOWER™**  
Make cleaning easy



# ProCleaner X150

The X150 is an all-stainless steel robot engineered for even the most demanding barn types. Packed with advanced features and thoughtful design, it delivers the perfect balance of speed, efficiency, and reliable technology to ensure great value for years to come.

The first-ever washing robot with obstacle-detecting dual washing arms (Patent Pending). Utilizing an innovative pivot technique, the arms retract and navigate complex environments without interrupting the wash cycle.

Built on over a decade of experience in agricultural automation and more than 2,000 active units, the X150 is a testament to proven reliability and cutting-edge innovation.

## Specifications

<b>Dimensions LxWxH</b>	43 x 26.38 x 72.4 inch
<b>Weight</b>	617 lbs
<b>Power supply (Charging)</b>	230 V*
<b>Amperage</b>	6 amp*
<b>Water consumption</b>	Min. 5 / Max 10.6 gallon/m
<b>Max. water pressure</b>	2900 psi
<b>High pressure pump</b>	External
<b>Max. water temperature</b>	140° F

\* battery

## Models compared

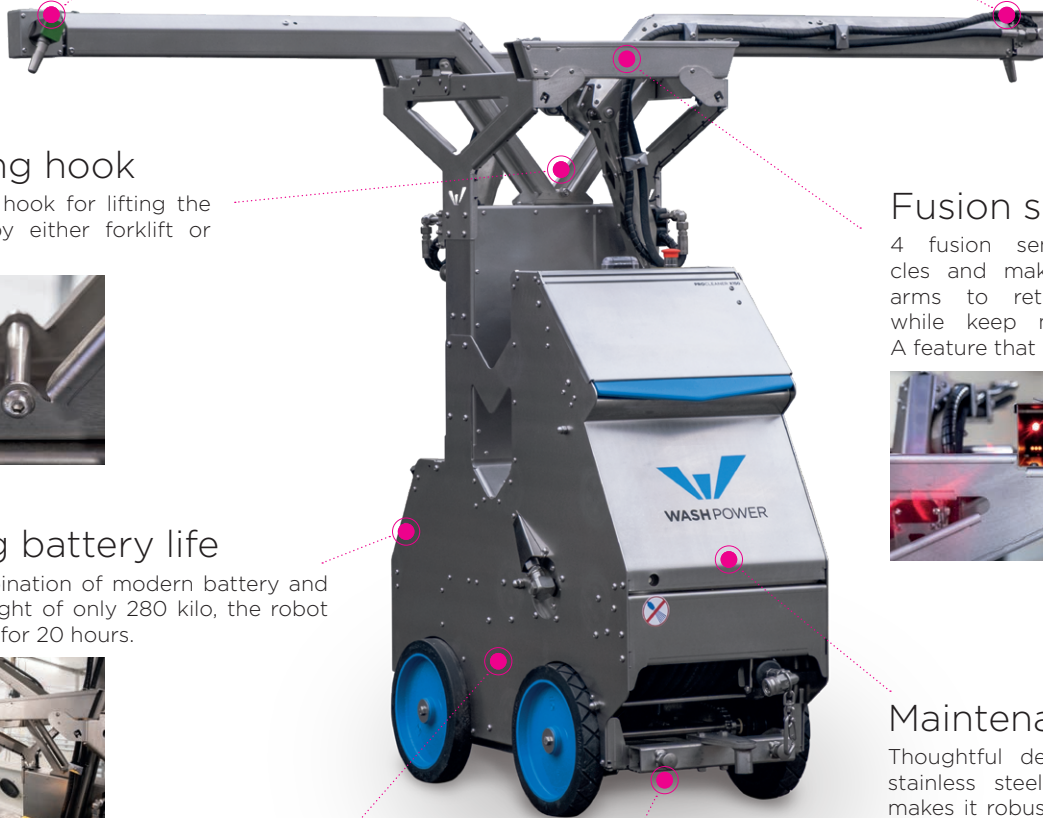


	<b>XB50</b>	<b>XB100</b>	<b>XS100</b>	<b>X150</b>
<b>Application</b>	Finishing and Nursery	Finishing and nursery	Farrowing	Farrowing
<b>Retracting arms</b>	No	No	No	Yes
<b>Arm length</b>	4 - 110 inch	4 - 110 inch	16 - 22 inch	0 - 35 inch
<b>Min. width</b>	26.6 inch	26.6 inch	20.8 inch	20.8 inch
<b>Weight</b>	518 lbs	639 lbs	639 lbs	617 lbs
<b>Battery</b>	Yes (12 hours)	Yes (24 hours)	Corded 110V	Yes (20 hours)
<b>Programs storing</b>	No	Yes	Yes	Yes
<b>Integrated hose</b>	No	Yes	Yes	Yes
<b>Dual arm wash</b>	No	Yes	Yes	Yes
<b>On site setup</b>	No	Included	Included	Included

# Features

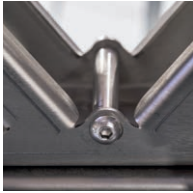
## Dual wash arms

Paired with a high-capacity pump the X150 can wash twice as fast, as if compared with only washing with one arm. Making it super efficient in those farms requiring a quick turnover.



## Lifting hook

Built in hook for lifting the robot by either forklift or crane.



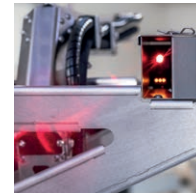
## Long battery life

A combination of modern battery and low weight of only 280 kilo, the robot can run for 20 hours.



## Fusion sensors

4 fusion sensors detects obstacles and make it possible for the arms to retract individually and while keep moving and washing. A feature that makes it even faster.



## Maintenance friendly

Thoughtful design and materials, like stainless steel chassis and couplings, makes it robust and easy to maintain in daily operations and also in the long run.



## Side wheels

Easy adjustable side wheels.



## Only 617 lbs

The entire robot weighs only 280 kilo, which makes it light and easy for anybody to move around.





**WASH POWER**<sup>TM</sup>  
Make cleaning easy

Watch video



  
WASH POWER

**Washpower Inc.**

1703 Division St  
Melrose Park IL, 60160  
Phone: +1 312 900 1703  
E-mail: ml@washpower.com

[www.washpower.us](http://www.washpower.us)